



Thoughtfully refined  
with women in mind

Subtle enhancements,  
improved outcomes



Infyna Chic™  
Intermittent Catheter

# The improved Infyna Chic™ Intermittent Catheter

We're committed to improving the self-catheterisation experience for the women who choose us, which is why we're introducing some subtle yet significant changes. Delivering even more comfort and confidence – for your peace of mind.



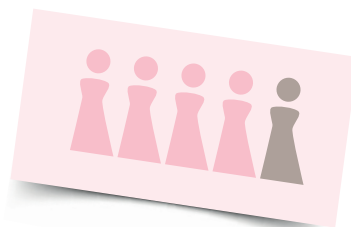
## What our users love

Our discreet, aesthetically pleasing design offers a sense of normality, without constant reminders of medical issues. The Infyna Chic™ catheter can be opened and closed with one hand, with the ability to carry, reseal and dispose of without leaks – confidently and hygienically.

In an evaluation with clinicians,

# 4 out of 5

would recommend this new version  
of Infyna Chic™ Intermittent Catheter



Hollister Data on File, BA-08350R, 2021.



# “

*I loved how it made me realise someone out there is thinking about women in my position. They've thought of everything... I take it everywhere I go.”*

Susi, 52  
Female using ISC for 7 years.

# So what's new?

## 1. New, clear tube

to aid visualisation.

## 2. Longer catheter tube

for confident, full bladder drainage.

## 3. More lubricious coating

for more comfortable insertion..



actual size



14cm  
overall length



## Better for you, better for the environment

As a single-use product, it's important any improvements we make also use more sustainable materials – making a positive impact on the environment and our users. The Infyna Chic™ catheter:



Is free from PVC

Has a fully recyclable case

Is made with 11% less plastic







# Committed to better

We think it's vital to constantly review and revisit our products. We have the ability to enhance lives and we take our responsibility seriously. Towards the women we serve and the planet too.

## A brighter choice

We know that even the small details can make a difference to how someone feels. Infyna Chic™ catheters are available in 4 sizes with pastel coloured funnels.



Size	Catheter length	Tip	SKU	Quantity per box
 8 Ch	14cm	Nelaton	7008	30
 10 Ch	14cm	Nelaton	7010	30
 12 Ch	14cm	Nelaton	7012	30
 14 Ch	14cm	Nelaton	7014	30

**For more information and to request FREE samples:**

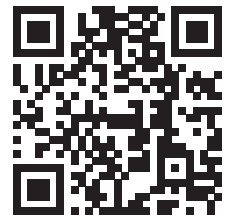
**Tel:** 0800 521 377 | **Email:** [samples.uk@hollister.com](mailto:samples.uk@hollister.com)

### Hollister Limited

Building 1010, Winnersh Triangle Business Park,  
Eskdale Road, Winnersh, Wokingham RG41 5TS

[www.hollister.co.uk](http://www.hollister.co.uk)

To learn more or to request a sample,  
visit [Hollister.co.uk/InfynaChic](http://Hollister.co.uk/InfynaChic)



The testimonials, statements and opinions presented are applicable to the person depicted. These testimonials are representative of that person's experience, but the exact results and experience will be unique and individual to each person.

Prior to use of Infyna Chic catheters, be sure to read the Instructions For Use for information regarding Intended Use, Contraindications, Warnings, Precautions and Instructions. Not all products are CE marked.

Hollister, the Hollister logo and Infyna Chic are trademarks of Hollister Incorporated.  
©2022 Hollister Incorporated. CC0740.

