

Tube Attachment Devices Portfolio

A Hollister Technology

Feeding Tube Attachment Device (F-TAD)

Tube attachment devices from Hollister provide an easy-to-use alternative to tape for securing tubes, drains, and catheters. Each device (except Anchor Fast which has a FlexTend barrier) features a skin-friendly FlexWear skin barrier to help protect patient skin, and an adjustable clamping mechanism to allow for easy tube positioning and better access for site care.

The easy-to-use alternative to tape.



Stock No	Description	Quantity/Box
9780	Drain Tube Attachment Device (D-TAD) <ul style="list-style-type: none"> • Secures a variety of drains or tubes (10-24 Fr) vertical to patient's skin • Sterile, latex-free 	5



Stock No	Description	Quantity/Box
9781	Horizontal Tube Attachment Device (H-TAD) <ul style="list-style-type: none"> • Secures drains, tubes, or catheters (5-40 Fr) parallel to patient's skin • Secures tubes at exit site or distal to exit site • Sterile, latex-free 	5



Stock No	Description	Quantity/Box
9782	Vertical Tube Attachment Device (V-TAD) <ul style="list-style-type: none"> • Secures drains, tubes, or catheters (5-40 Fr) vertical to patient's skin • Secures tubes at exit site • Sterile, latex-free 	5



Stock No	Description	Quantity/Box
9785	Suction Tube Attachment Device (S-TAD) <ul style="list-style-type: none"> • Secures nasogastric suction tubes (12-18 Fr) • Butterfly-shaped skin barrier conforms to patient's nose • Unique swivel clamp eliminates pressure on the nares • Latex-free 	20



Stock No	Description	Quantity/Box
9786	Feeding Tube Attachment Device (F-TAD) <ul style="list-style-type: none"> • Secures nasogastric/nasointestinal tubes (5-18 Fr) • Butterfly-shaped skin barrier conforms to patient's nose • Unique swivel clamp eliminates pressure on the nares • Latex-free 	20



Stock No	Description	Quantity/Box
9799	Anchor Fast Endotracheal Tube Fastener <ul style="list-style-type: none"> • Secures oral endotracheal tubes • Secures tubes at exit site or distal to exit site • Sterile, latex-free 	12

Hollister and logo, and Anchor Fast are trademarks of Hollister Incorporated.
© 2012 Hollister Incorporated. CC0261.

Secure
Accessible
Comfortable



Hollister Limited
Rectory Court
42 Broad Street
Wokingham
Berkshire RG40 1AB

For more information and
to request FREE samples:
Tel: 0800 521 377
Email: samples.uk@hollister.com

www.hollister.com/uk



Feeding Tube

Attachment Device (F-TAD)

The Feeding Tube Attachment device (F-TAD) can be used to secure in place 5 Fr - 18 Fr Naso-Enteral Feeding Tubes, including Naso-Gastric (NG) and Naso-Jejunal (NJ tubes).

Tube attachment devices from Hollister provide an easy-to-use alternative to tape for securing tubes, drains, and catheters. Each device features a skin-friendly FlexWear skin barrier to help protect patient skin and an adjustable clamping mechanism to allow for easy tube positioning and better access for site care.

Applying the device

1. remove

the release paper from the adhesive barrier. Position the device so the clamp extends approximately 1/2" (12.7 mm) below the tip of nose.

2. apply

the barrier to the patient's nose by pressing down firmly, but gently, across the barrier surface to assure proper adhesion. to assure proper adhesion. Hold gently to the skin for 60 seconds.

3. secure

the feeding tube by closing the clamp around it and squeeze the arms firmly to fully engage the serrated teeth.

Note: The Hollister Feeding Tube Attachment Device should be monitored regularly to confirm barrier adhesion to the nose.

Butterfly-shaped skin barrier conforms to patient's nose

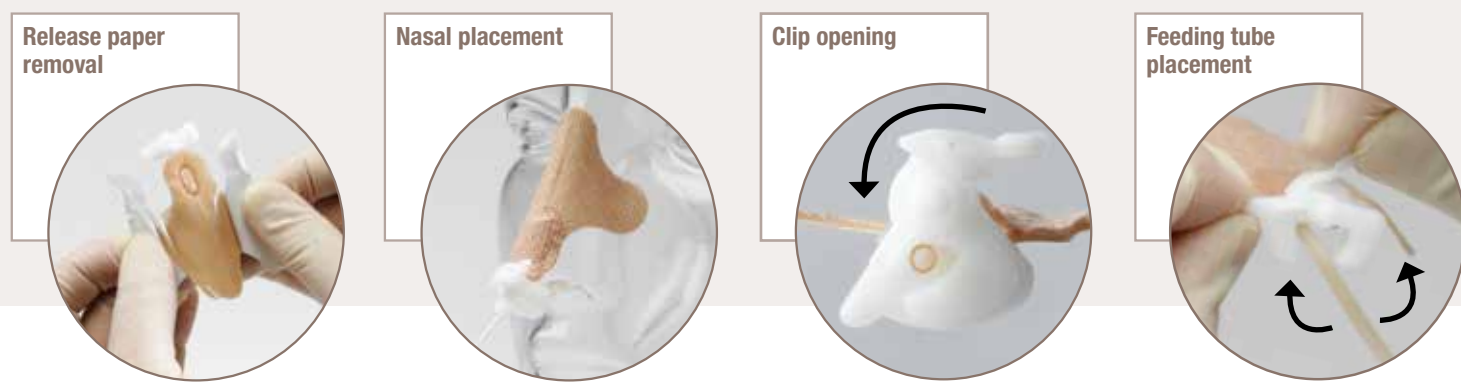
Latex Free

F-TAD clip

Unique swivel clamp eliminates pressure on the nares

F-TAD clip

Secures nasogastric & nasointestinal tubes (5-18 Fr)



Tube Attachment Devices Portfolio



Anchor Fast Oral Endotracheal Tube Fastener



Horizontal Tube Attachment Device (H-TAD)



Vertical Tube Attachment Device (V-TAD)



Drain Tube Attachment Device (D-TAD)



Suction Tube Attachment Device (S-TAD)



Feeding Tube Attachment Device (F-TAD)